

Deluge Systems

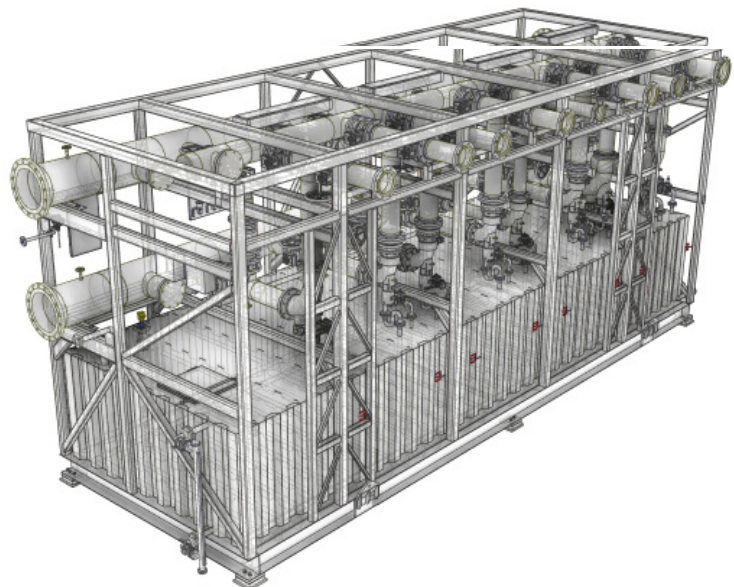
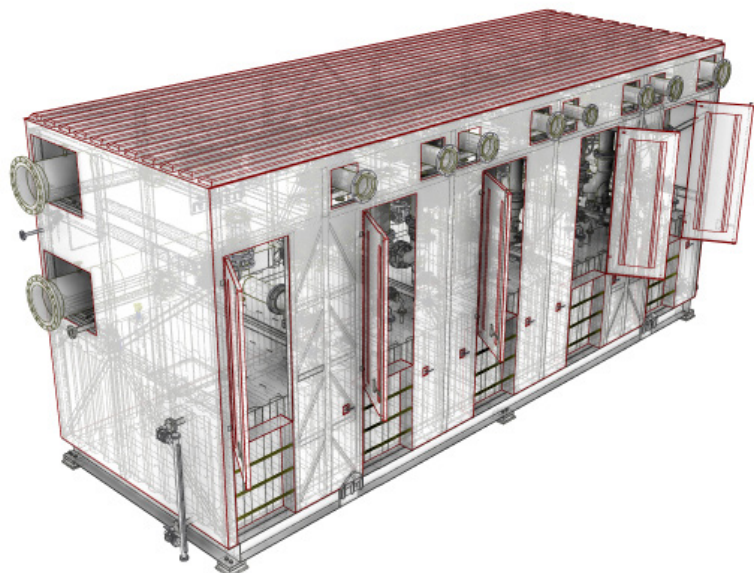
Deluge systems are used for special hazards, where rapid fire spread is a concern, as they provide a simultaneous application of water over the entire hazard.

Deluge Systems are named from the »deluge« of water they provide when activated and they protect both by flame extinguishment and cooling.

The most basic Deluge System consists of only 3 parts: Deluge Nozzles, Deluge Valve and Distribution pipework

Depending on the project requirements, there are several possible flow control activation solutions (e.g electric, electro-pneumatic and hydraulic).

The Skids can be open frame or also enclosed with insulation and temperature control function. They are manufactured in suitable material for corrosive and harsh environments.





Deluge Systems

Custom Deluge Valve Skid Features

- Sizes:** From 3" to 12" valve set. Single or Multivalve skids.
(14" and 16" Deluge valves also available)
- Flow capacity:** Up to 33000 l/min. (+)
- Design pressure:** 20 barg standard, other on request
- Foam/ AFFF:** From central foam system or c/w integrated storage tank.
- Layout options:** We will adopt any design requirements by our customer
- Material options:** To customer requirements including Titanium, Super Duplex, CuNi, Galv. Carbon Steel, GRE/GRP or Elastopipe™.
- Enclosure:** Open frame or fully enclosed and heated/illuminated.
Certified for offshore lifting if required.
- Approvals:** Projects approvals available to customer requirements including DNV, Lloyds, ABS
- Design codes applied:** NFPA, PED, SIL, ATEX, ASME, API, ANSI, BS, AS, ISO, DNV, ABS, Lloyds, NORSOK etc.

All deluge skids are being designed with strict focus on working environment and accessibility during operation and maintenance.

All deluge skids can be full flow tested at our premises.

For further information, addresses, email addresses and phone numbers - please see our website:

www.semcomaritime.com

