

# Shipyards in a box

Site preparation



# Site preparation

## 1.1 The Work undertaken by Semco shall include, but not limited to:

- Provision of necessary facilities for preparation of the Work.
- Provision of necessary personnel to plan, co-ordinate, site supervise and perform the Work.
- Provision of necessary Equipment & Materials.
- Mobilisation / demobilisation of personnel, Equipment, Materials and tools.
- Provision of necessary inspection, and confirm certification of Equipment and Materials as well as Bollards test and confirmed.
- Bridging Document.
- Provision of necessary for Safety Equipment such as Fire extinguisher, First Aid boxes, safety signs.
- Drawings of the Quayside and Safety Plan
- Provision of necessary Security items ensure no personnel
- ISPS
- Arrange a meeting with the Harbour authorities and the chief pilot to discuss the arrival and mooring arrangements.
- Strops and shackles for the anchor lines. Spare shackles and strops
- All bollards to be clear and ready for use.
- Quayside to be marked with final rig mooring position.
- Mooring ropes to be available on quayside ready to be pulled. Any spare ropes should be mobilised as a precaution.
- Provision of necessary Mooring personnel to be available to handle ropes.
- Work boat to be available to transfer ropes/Wires.
- Seabed condition.
- Small mobile crane to be available to handle wires and general activities.
- Forklift to be available. Tensioning mooring lines.
- Appropriate gangway to be available, with pre built tower if required while afloat.
- Provision of necessary Contact Local harbour Tugs
- Stevedore
- Provision of necessary Mooring Assistance Arrival
- Yokohama fenders & Yokohama fenders to be available and in the water prior to rig arrival.
- Fender Barge if required
- Offices
- Computers and servers.
- Meeting Rooms
- Accommodation
- Security items ensure no personnel enter the vessel and ISPS
- Oil Spill Response container.
- T card access.
- Distribution equipment and cables
- Storage Area in and out
- Dockside raw water
- Temporary Power El power
- Sewage Connection / Disconnection
- Waste
- Temporary toilets
- Emptying of scrap containers such as Compactor, Wood, Organic, Mixed waste, Wood, Organic and Mixed Waste)
- Rental of Container for waste
- Sewage / Liquid waste Destruction of Black & grey Waste.
- UHF Radios
- Any tidying of quay prior to arrival.

# Onshore

## Shipyard in a box



## Define location Generic

### Yard Services

When Semco Maritime receives an inquiry for a rig upgrade, we will localize a suitable yard, which fits the client's requirements for capacity and geographical localization, and use the yard as our nominated contractor. Through our extensive experience within rig upgrades, we have built a vast expertise within yard requirements during rig projects and SPS's.

Since the requirements are not always fulfilled on the yards, we will supplement the yard facilities by utilizing Semco Maritime's mobile containerized facilities and ensure that all the clients' yard requirements are fulfilled. These services includes, but is not limited to:

- Electrical Power
- Water
- Firewater
- Drainages
- Sewage
- Environmental Approvals
- Arrangement of Tugs
- Quaysides
- Mooring Plans
- Workshops
- Offices
- Indoor- and Outdoor Storage
- Accommodation and Catering
- Cranes
- Fork Lifts
- Yard Services
- Floating Booms
- Painting
- Cherry pickers
- Parking
- Pilots



### HSE and yard security Generic

Safety is the key factor of every project. In Semco Maritime we insist on adhering to globally approved standards in health, safety and environment. Our staff receive regular training in the latest health and safety tools and procedures. Besides that, we help our customers minimise the environmental impact of their projects and operations. We ensure that all our processes and projects meet the highest international standards.

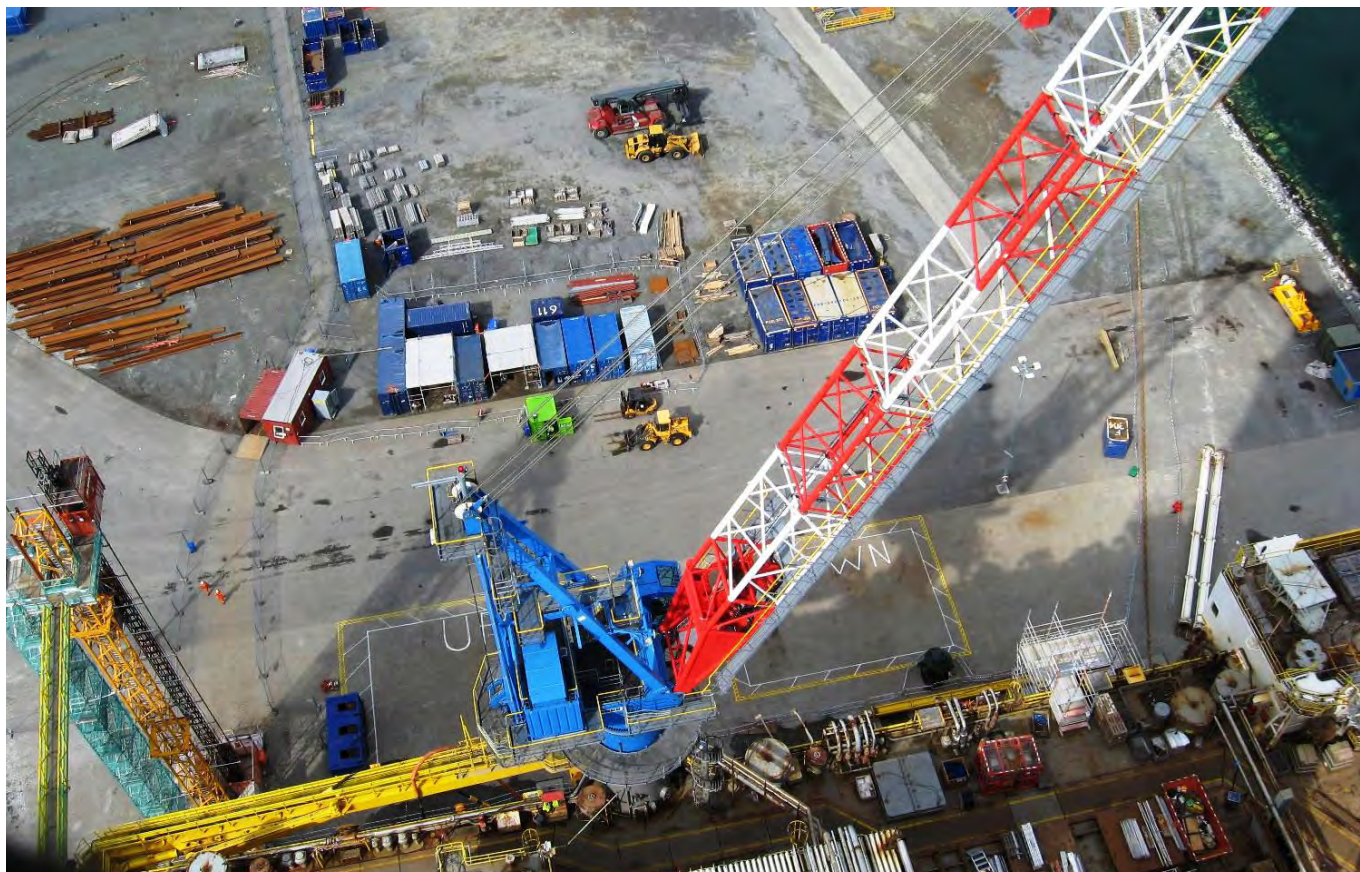
High security during our yard operations is maintained through the following systems:

- The yard will be safely declared and certified as an international port terminal according to the ISPS requirements.
- Access to the rig will be through 24hr manned POB access control and electronic tally systems.

In order to minimize the risk of injuries during the project execution we have conducted a comprehensive HSE system, covering all applicable procedures, routines and systems during yard operations, and for each rig project we will conduct the following material in collaboration with the yard:

- Yard Emergency response flow charts
- Contact lists
- Bridging documents
- Emergency plans
- Safety plans





## The boxes Generic

The boxes are containers, which has been outfitted to contain necessary tools and equipment for offshore projects or even various facilities, which is often required during yard stays. Semco Maritime extensive fleet of containers for use offshore or onshore includes:

- Workshop Containers (Electrical, Mechanical, etc.)
- Sub-supplier consolidated supplies
- Laundry Containers
- Changing Rooms
- Land-based Accommodation
- Kitchens
- Offices
- Various Stocks
- Toilets
- Meeting Rooms
- Induction Rooms
- Recreation Rooms
- Coffee Shops
- HSE Containers



The containers are selected based on the project requirements, for offshore projects storage, workshop and supply containers are used. At the same time, the boxes can supplement onshore projects in the yard with regards to facilities they might not have available on-site. Hence, utilizing from the facilities on the yard whenever possible is more beneficial for both parties, due to i.e. cost and accessibility. The only boxes that will always be brought along is the various stocks, which contains the most vital spare parts for the various trades working on the MODU during the upgrade.







Dropbox Marketing\Brochures\Shipyard in a box 051216.suh

## Semco Maritime as a turn-key contractor

By utilizing Semco Maritime rather than the yard directly we will ensure that the out-of-service period is minimized, since we do not have any interest in keeping the rig at the quay-side for as long as possible to provide additional yard services.

Semco Maritime already has an extensive network of frame agreements with yards in Denmark, Norway, UK and Vietnam, but we are able to operate in all locations worldwide.

Furthermore, our shipyard-in-a-box offshore concept allows us to perform projects offshore, ensuring minimum downtime for the rig during modifications and upgrades.